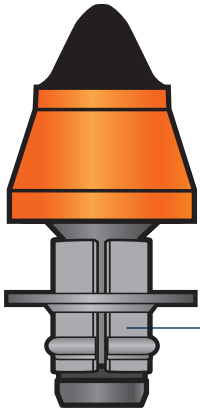
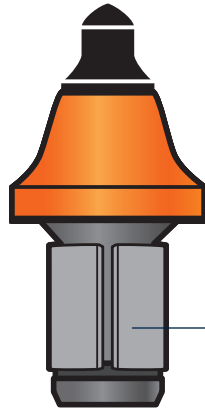


# CARBIDE-TIPPED TOOLS



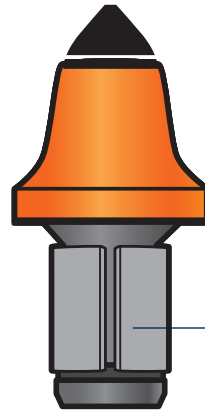
**HARD ROCK  
AND GRAVEL  
CONDITIONS**

**Part Number:**  
MT50116



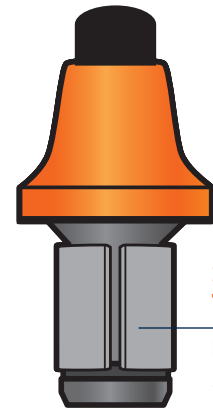
**ASPHALT  
PLANING  
TOOL**

**Part Number:**  
MT10115



**ECONOMY  
TOOL**

**Part Number:**  
MT10100



**STANDARD  
TOOL**

**Part Number:**  
MT10105

This tool is our largest carbide tip on a high penetration design that is available in the wedding band clip or sleeve.

**System 2100 or Kenemetal Board  
1-3/4" Spacing**

## A Carbide-Tipped Tool To Match Any Job.

Not selecting the right tool will increase your overall maintenance costs. The right tool will reduce the number of passes needed whether your project is road reclamation, road maintenance or new highway construction.

The right style will penetrate more easily, using less down pressure and horsepower. It all results in less time to get the job done and less wear and tear on your equipment.

### CALL FOR CURRENT PRICING.

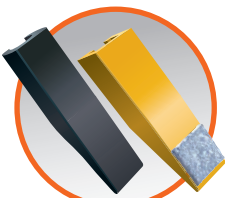
If you need help in selecting the right tool to cut your maintenance cost, or need further technical information, call and talk personally to a Winter® Tool Expert.



**For Road Grading System  
2000 or 2500.**

**1.5" Tool Spacing.**

### OTHER HIGH-QUALITY GRADER ACCESSORIES



**SCARIFIER  
TEETH**



**MILLING TOOL  
HOLDERS**



**HARDWARE**



**WINTER®**

*We are cutting edge.®*

winterequipment.com

**800-294-6837**