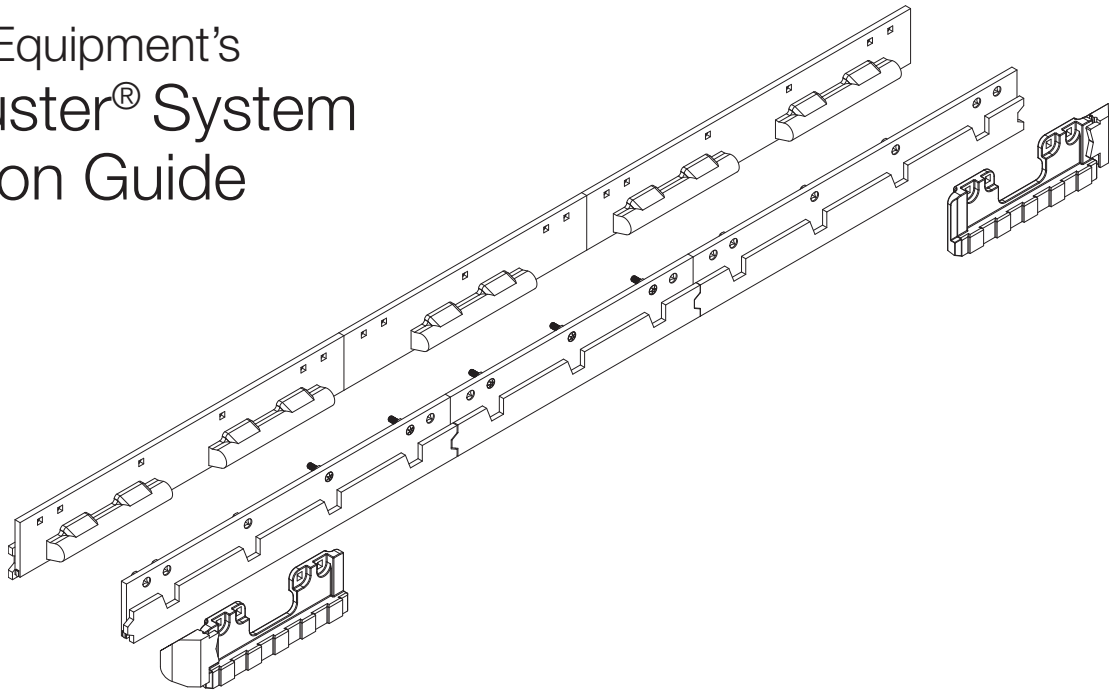




800.294.6837 | WinterEquipment.com

WINTER® Equipment's BlockBuster® System Installation Guide



Safety Definitions

! DANGER

If the danger is not avoided, it will cause death or serious injury.

! WARNING

Means if the warning is not heeded, it can cause death or serious injury.

! CAUTION

Indicates a potentially hazardous situation if not taken, it may cause minor or moderate injury. It may also be used to alert against unsafe practices.

NOTE:

Indicates an action that could lead to damage to your blade, snow plow or other property. Other useful information may also be described.

- Pinch points
- Proper plow jack usage
- Proper torque required

Always keep beneath plow clear, while in the up (jacked) position

*Winter Equipment is not responsible for failure to follow installation instructions that may result in harm.
Follow all safety warnings while installing plow*

WINTER® Equipment's BlockBuster® System Installation Guide

Step 1

BlockBuster System includes [Bill of Materials, BOM (Fig. A)]

Part Number	Description	3' Blade Sections	4' Blade Sections	PlowGuard MAXX DS	PlowGuard MAXX PS	Bolt Kit*
SYS-BBH8UCGC	8ft BlockBuster	2	1	1	1	2
SYS-BBH9UCGC	9ft BlockBuster	3	0	1	1	2
SYS-BBH10UCGC	10ft BlockBuster	2	1	1	1	2
SYS-BBH11UCGC	11ft BlockBuster	1	2	1	1	2
SYS-BBH12UCGC	12ft BlockBuster	3	1	1	1	2

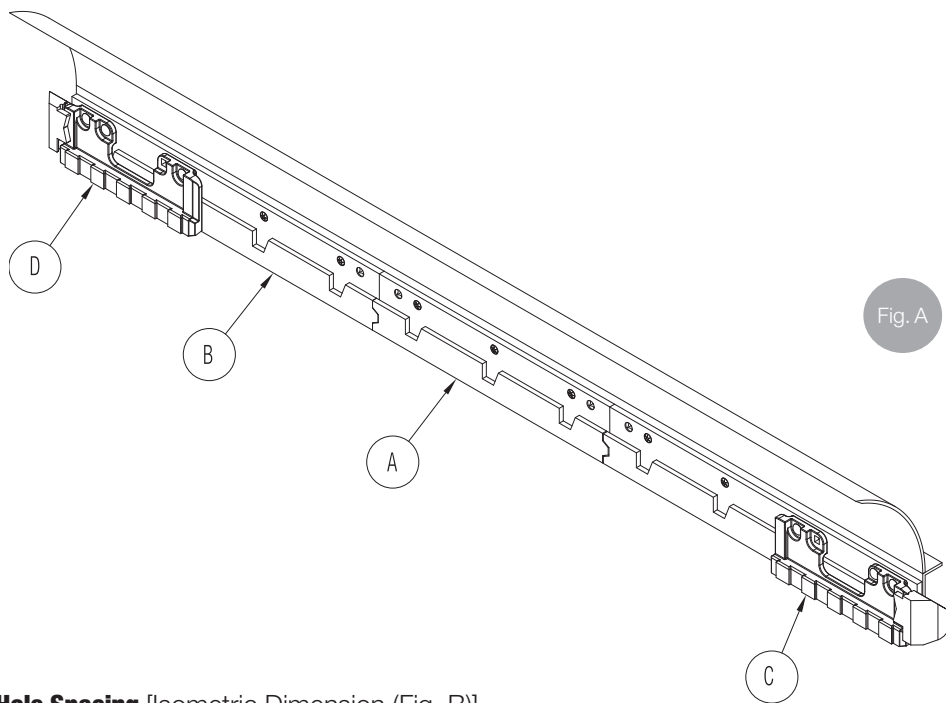


Fig. A

Step 2

Measuring Your Hole Spacing [Isometric Dimension (Fig. B)]

The BlockBuster® Blade is engineered to fit hole patterns of 3-3-12. This means that your first hole should fall 3" on center from the passenger side edge of the blade, followed by 3" on center and then 12" on center for the majority of the blade until reaching the final two holes of 3" on center and finally 3" on center to the edge of the driver's side of the blade.

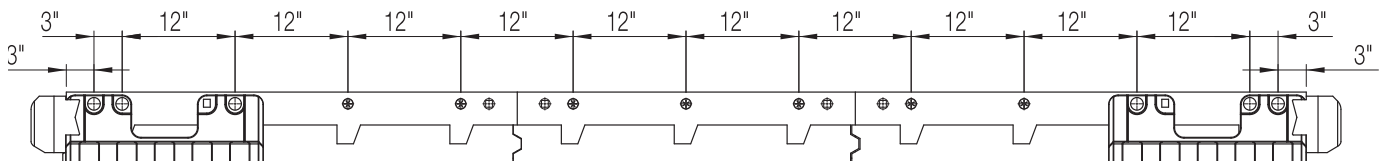


Fig. B

WINTER® Equipment's BlockBuster® System Installation Guide

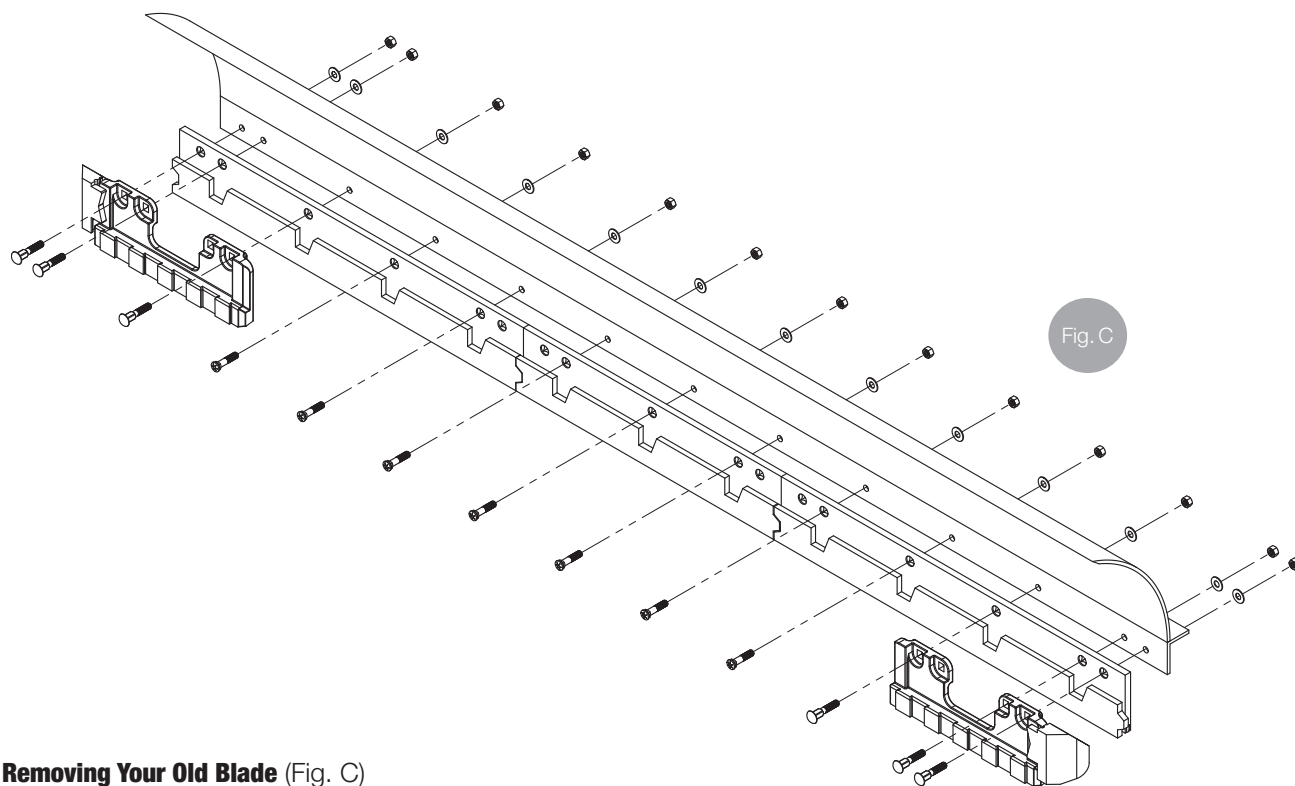
Step 3 Mounting Instructions

Time Allotted: 45 Minutes

Tools Required: Jack stand, torque gun, hammer, torch, safety glasses, steel toe boots

Additional Tools: Penetrating oil, wire brush

Installing New Winter Equipment Blade (Fig. C & Fig. D)



Removing Your Old Blade (Fig. C)

NOTE: It is recommended that this is a two-person job for safety reasons.

NOTE: Take precautions while removing old blade. Sharp debris could be present harm.

1. Park your plow truck on level ground and set the parking brake. Raise your plow and set two jack stands nearest to the moldboard without resting on your worn blade. Rest plow on jack stands and turn off truck.
! DANGER Avoiding the proper safety precautions can cause serious harm to the installer.
2. Remove Passenger Side first. You can remove your old blade by one of three methods (loosening with wrench, grinding, or torching the bolts/nuts off) **! WARNING** Take extreme caution when removing worn blades. Blade can unexpectedly fall during dismount and cause bodily harm.
3. Remove any center blade sections followed by the Driver Side, lastly. Repeat procedure from previous steps.
! WARNING Take extreme caution when removing worn blades. Blade can unexpectedly fall during dismount and cause bodily harm.

Preparing Your Moldboard for Install

1. Clean Moldboard (Fig. C) Using a wire brush and penetrating oil to loosen any debris or rust. This will help to give a stronger bond and promote more complete contact between your new Winter Equipment blade and your moldboard.

WINTER® Equipment's BlockBuster® System Installation Guide

Install new Winter Equipment blade (Fig. D) Once your old blade is removed and your mold board is free of debris and rust, it is time to install your new blade.

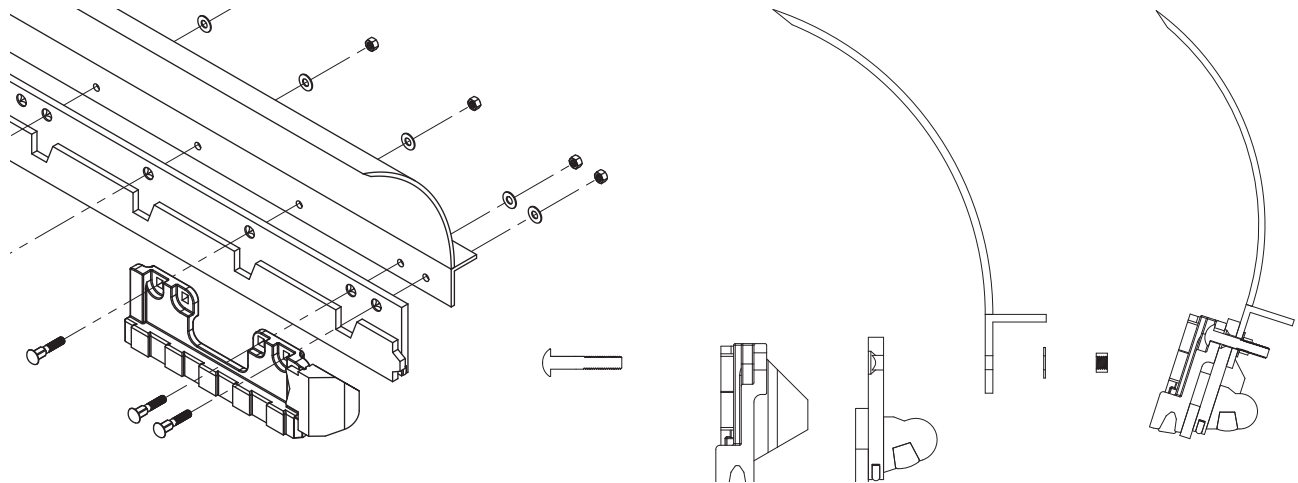


Fig. D

1. Start on either end of your blade (PS or DS) and work your way across.
! CAUTION Use caution when mounting new blades. There are many pinch points.
2. Set and hand tighten outside bolts to assist with level alignment
3. Once outside bolts are in place install remaining bolts and hand tighten.
NOTE: Only hand tighten all hardware until all blade segments are in place.
4. Assure blade is level and torque bolts to ASTM / SAE J1701 Specifications.
5. Next install the center blade segment(s) followed by the passenger side (PS) blade following steps 2-4 directly above.
6. Once all blade segments are installed confirm that all bolts are properly torqued to ASTM / SAE J1701.
NOTE: Do not over torque your hardware. Over torqueing can cause hardware failure.
NOTE: Re-torque your hardware after the first 10 plow hours. This will assure proper fitment.
7. Clean the area under the plow from any debris or old hardware. Power up your truck, engage/raise plow and remove jack stands. Sitting your plow on level ground, spot check your new blade for alignment.

WINTER® Equipment's BlockBuster® System Installation Guide

Setting your plow at the proper attack angle is very important. This will help your new blade to wear in properly and give you the most ideal down pressure (PSI).

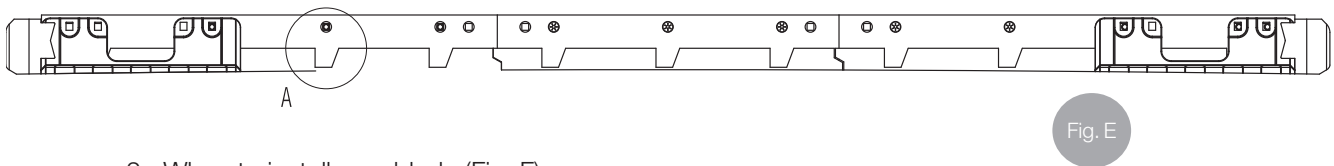
Care of New Blade

In-season

1. Re-torque your hardware after the first 10 plow hours.
2. Confirm blade is making level contact with surface.
3. If the winter has been heavy keep an eye on your wear indicators to assure level wear and the rate at which you are wearing your blade.

Off-season

1. Wear indicators (Fig. E)



2. When to install new blade (Fig. F)

This is the indication that you will begin to wear into your moldboard. **All carbide has been depleted** and damage to your moldboard is highly likely.

This area is safe but serious consideration should be given to blade replacement in the near future. It is suggested that you change your blade prior to any large snow storm or heavy usage.

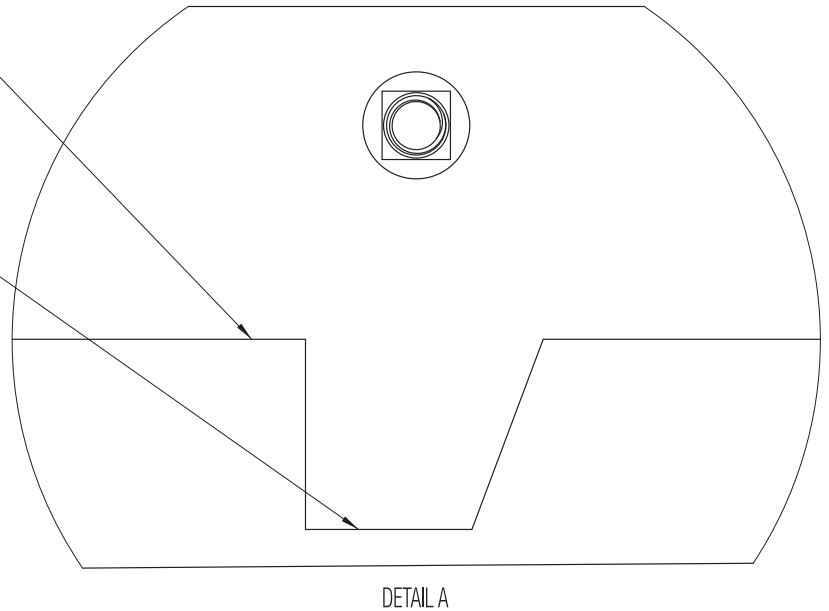


Fig. F

WINTER® Equipment's BlockBuster® System Installation Guide



1900 Joseph Lloyd Parkway
Willoughby, Ohio 44094
Sales@WinterEquipment.com

**Our quality impacts and protects what
matters most, people! Call us today.**

800.294.6837 | WinterEquipment.com